

CASIO.

EXciting EXILIM

Fascinates with design.

Inspires with innovation.



EXILIM
www.exilim.com





Photo fun enters the picture.
With CASIO digital cameras.

Is it possible to boost excitement? Naturally ... with a click. The new EXILIM digital cameras from CASIO show their true colours in compact sizes - perfect in form and sophisticated in design.

A variety of innovative new features ensure that you will have even more fun while taking pictures. The new **EXILIM Engine 2.0*** offers a powerful performance - with faster output, space-saving technology, fascinating image quality, and a combination of anti-shake protection** and efficient power consumption. So your shots always remain what they are - exciting!

The new models will also capture your heart with high-light functions. Look forward to the new **EXILIM EX-V7**, featuring an "invisible" 7x optical zoom - one of the smallest and slimmest digital cameras in the world to be equipped with a powerful high zoom! The new **EX-Z1050** will inspire you with 10.1 megapixels and its Wide Screen TFT colour display. You can enlarge image details from motifs to full format, and save them as additional high-resolution photos. Turn one motif into several - it's so easy to duplicate photo fun!

Get ready for the new EX-V7 and discover the lively world of EXILIM digital cameras - and their fascinating designs. You're sure to be impressed with the level of moving emotional and technological innovations.

*EX-V7, EX-Z1050 **EX-V7

EXciting EXILIM

CASIO.

Get closer.



The 7x optical zoom. Large zoom. Small camera.
Hidden inside the new EXILIM EX-V7.

- > 7x optical zoom
- > Mechanical image stabilizer
- > Anti Shake DSP*
- > Motion analysis technology
- > 7.2 megapixels
- > Extra-bright 6.4 cm TFT colour display
- > High-quality movie function** with stereo sound (also in 16:9 format)
- > Electronic movie stabilizer
- > Easy Mode
- > Manual settings

Can a zoom be invisible? It can - even when it's high powered. The new EXILIM EX-V7 is the flat digital camera with 7x optical zoom. Get ready for outstanding photo and movie results with a powerful zoom capability. The 7.2 megapixel EX-V7 will inspire you with its large, extra-bright 6.4 cm TFT colour display. With the EX-V7, you can zoom in on the action. Expect the far away up close.

* Electronic image and movie stabilizer. ** Maximum recording time: 10 minutes per movie, H.264 format.



7x optical zoom. EX-V7.

7X OPTICAL HI-ZOOM

H.264
HIGH QUALITY
MOVIE

7.2
mega
pixels

**SUPER
LIFE**
BATTERY

Windows Vista

ANTI-SHAKE DSP

**MECHANICAL
IMAGE STABILIZER**



Turn the camera on or off with the sliding lens protection function.

Movie sequences in stereo sound.



Internal flash with a wide range of functions including rapid flash, soft flash and red-eye reduction.

7x optical zoom offers virtually unlimited possibilities for photos and films.

Movie Light - thanks to LED movies can even be shot in poor lighting conditions.

The new EX-V7: invisible 7x optical zoom, visibly sophisticated camera.

The new EX-V7 is the first EXILIM digital camera to offer a 7x optical zoom in a very sophisticated design. In combination with the 7x optical zoom, the image stabilizer uses CCD shift technology and Anti Shake DSP* to minimise the risk of picture blur caused by shaking hands or moving subjects. With the electronic movie stabilizer, your high-quality movie sequences can even be shown in Wide Screen image quality on PCs and TVs.

* Electronic image and movie stabilizer.



Extra-bright 6.4 cm TFT colour display.

Two zoom speeds: depending on your needs, zoom slowly or quickly.

Mode dial - this thumb dial offers access to various modes such as automatic settings, shutter speeds, and aperture priority, manual settings, the high-quality movie function, Easy Mode, BEST SHOT, and Movie BEST SHOT.



The **menu button** allows quick access to all the camera settings.

With the **cross controller**, you can conveniently scroll through the menu.

Easy Mode reduces the number of menu settings on your EXILIM digital camera to the essential.

CASIO.

Be a 10.1 millionaire.



Powerful 10.1 megapixels.
Captivatingly diverse with the new EX-Z1050.

- > 10.1 megapixels
- > Extra-bright 6.6 cm Wide Screen TFT colour display
- > 3x optical zoom
- > Anti Shake DSP*
- > Super Life Battery
- > High-speed continuous shooting

10.1 megapixels in such a compact camera? With 10.1 megapixels, the new EXILIM EX-Z1050 offers outstanding image resolution. The advantage: motifs can be shot in greater detail. This allows you to enlarge a selected part of the image in high-resolution quality and store it as an additional photo. Thanks to 10.1 megapixels, even these cropped images can be printed in good quality. Immerse yourself in the wonderful world of photos.

*Electronic image and movie stabilizer.



10.1 megapixels. EX-Z1050.

10.1
mega
pixels

ANTI-SHAKE DSP

SUPER
LIFE
BATTERY

wide+bright
6.6 cm
TFT colour display

370
PHOTOS
from each battery charge*

Actual size



Display:

brightness levels can be adjusted while shooting, depending on the lighting conditions.

The easy operation menu:

all symbols for framing and image focusing are arranged in a bar for a clear overview.

3:2 photo format:

the classic format for images.

4:3 screen format:

view photos in full format on a computer or television screen.

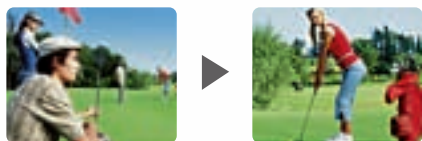
16:9 Wide Screen format:

for viewing photos on a Wide Screen television.

* According to CIPA standard.

More megapixels for more possibilities: the new EX-Z1050 with 10.1 megapixels.

With 10.1 megapixels, the new EXILIM EX-Z1050 offers phenomenal image resolution. Or shoot subjects in 16:9 format and view them on the large TFT colour display. Thanks to the High Sensitivity function, you can explore new photo ideas which are perfectly adapted even to subdued light conditions. It's time to think in larger dimensions!



Non Deterioration Zoom

This function extends the 3x optical zoom. The digital camera achieves an extremely high zoom capability of up to 17,1x enlargement at the VGA resolution setting.



Cropping

The 10.1 megapixels allow you to enlarge a selected part of the image in high-resolution quality and store it as an additional photo.



CASIO.

Big Screen.
Big Entertainment.



The EXILIM EX-Z75 with large
6.6 cm Wide Screen TFT colour display.

- > 7.2 megapixels
- > 6.6 cm Wide Screen TFT colour display
- > 3x optical zoom
- > Anti Shake DSP*
- > Easy Mode
- > Super Life Battery

With its large 6.6 cm Wide Screen TFT colour display, the new EXILIM EX-Z75 with 7.2 megapixels offers more entertainment. Compact and easy to use - for more digital photo fun without the complexity. Anti Shake DSP* also assures this by minimising the risk of blurred images. High performance that really gets heads turning!

The EX-Z75 is available in silver, blue, pink, and as of May 2007, also in black.

*Electronic image stabilizer.



Wide Screen display.
EX-Z75 with 7.2 megapixels.



wide
6.6 cm
TFT colour display



EX-Z75

Actual size

Large 6.6 cm Wide Screen TFT colour display with brilliant image presentation.



DIRECT ON Rec/DIRECT ON Play:
quick-start technology makes all functions available immediately – whether you want to take pictures or view them.

BEST SHOT button:
at the touch of a button, you can instantly call up the BEST SHOT motif programmes.

Menu button for
direct menu access to all camera settings.



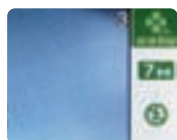
Non Deterioration Zoom:

This function extends the 3x optical zoom. The digital camera achieves an extremely high zoom capability of up to 14.2x enlargement at the VGA resolution setting (EX-Z75).

The EX-Z65 with the large 6.6 cm Wide Screen TFT colour display.

- > 6.0 megapixels
- > 6.6 cm Wide Screen TFT colour display
- > 3x optical zoom
- > Anti Shake DSP*
- > Easy Mode
- > Super Life Battery

A large display for a large amount of photo fun: the new EXILIM EX-Z65 packs a punch with its 6.6 cm Wide Screen TFT colour display and 6.0 megapixels. Take it everywhere - you'll never miss a shot and always be at the centre of the action. Its powerful lithium-ion battery guarantees you hours of photo fun. What's more, it is very easy to use. The EX-Z75 and EX-Z65 combine forward-looking innovation with sleek design.



Easy Mode reduces the number of menu settings on your EX-Z75 and EX-Z65 to the essential. Flash on/off, self-timer on/off, and image size can be selected. The clearly organized display ensures the camera is a snap to use. So faulty operation is virtually eliminated.

The EX-Z65 is available in silver.

*Electronic image stabilizer.



Wide Screen display.
EX-Z65 with 6.0 megapixels.

CASIO.

Pure seduction.



Designer object: the irresistible EXILIM EX-S770.

- > Extra-bright 7.1 cm Wide Screen TFT colour display
- > 7.2 megapixels
- > 3x optical zoom
- > Data Storage function
- > Anti Shake DSP*
- > MPEG-4 movie** (also in 16:9 format)
- > Electronic movie stabilizer
- > Super Life Battery

What makes the EX-S770 even more valuable? A design award. The EXILIM EX-S770, the stylish digital camera for photos and movies, has been awarded with the iF product design award 2007. With its large, bright 7.1 cm Wide Screen TFT colour display, it offers great image rendition, excellent photo quality and an electronic movie stabilizer for optimal MPEG-4 movie quality. And with the Data Storage function, you can save your office data, web pages, or e-mails. Design meets innovation.

*Electronic image and movie stabilizer. **Maximum recording time: 10 minutes per movie.



product
design
award

2007



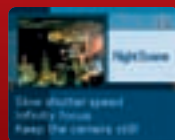
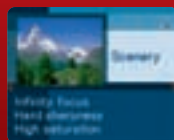
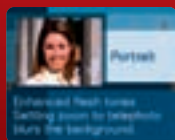
Award-winning design. EX-S770.

All-round talent in any situation.

Actual size

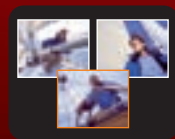
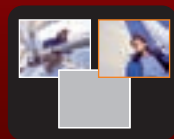
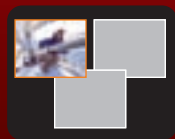


**DIRECT ON Rec/
DIRECT ON Play:**
quick-start technology
makes all functions
available immediately -
whether you want to take
pictures or view them.



BEST SHOT button:

with just a touch of a button, you can instantly
call up the BEST SHOT motif programmes.
So you can always be sure of quickly achieving
great picture results.



Layout Shot function:

for creative users: shoot two or three
photographs in quick succession
inside one image frame, which are then
automatically saved as a collage.

Moving. The EX-Z700 with a brilliant display.

- > 7.2 megapixels
- > 6.9 cm TFT colour display
- > 3x optical zoom
- > Anti Shake DSP*
- > Super Life Battery
- > AV output

Good photos in any situation? The exciting EX-Z700 with Anti Shake DSP* function reduces the risk of blurred photos. The large, extra-bright 6.9 cm TFT colour display shows everything brilliantly, and the 7.2 megapixels guarantee you great shots. With the Super Life Battery you get to take up to 460 pictures** per battery charge. An additional highlight: the BEST SHOT motif programme Auto Framing, which automatically focuses your subject and ensures an optimally centred image. A true all-round talent for any situation – the EX-Z700.

*Electronic image stabilizer. ** According to CIPA standard.



Anti Shake DSP. EX-Z700.

● EX-V7

● EX-Z1050

● EX-S770

● EX-Z700

● EX-Z75
EX-Z65

The EXILIM photo functions.

Mechanical image stabilizer**



without image stabilizer



with image stabilizer

The flexible CCD chip compensates for camera shakes while shooting. This offers a particular advantage in high zoom ranges, as the risk of blurred photos is minimised.

**Mechanical image stabilizer only in the EX-V7.

Anti Shake DSP*



without image stabilizer



with image stabilizer

Photographing moving objects or shooting an image when you're movin ... these are usually situations in which pictures can easily become blurred. With the Anti Shake DSP* electronic image stabilizer function, this risk is reduced to a minimum.

*Electronic image stabilizer.

Auto Macro function



The camera switches automatically to Macro mode when taking close-up shots and back again.

Rapid Flash



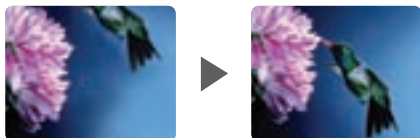
Don't miss a moment - even in the dark: using the Rapid Flash function in continuous shooting mode, you can take three flash photos in a single second.

Flash Assist function



Rooms or backgrounds that are beyond the normal flash range can now be automatically brightened, if necessary.

Quick Shutter



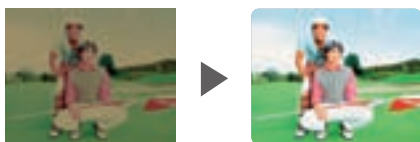
Crisp photos of fast-moving objects. To save the time needed for automatic focusing, Quick Shutter switches off the autofocus function. Now you can take the shot even faster. There is just the simple shutter delay.

Easy Mode



The Easy Mode reduces your EXILIM digital camera's menu setting to the essential. Flash on/off, self-timer on/off, and image size can be selected. The concise display ensures easy camera operation. So it's virtually impossible to make a mistake.

Revive Shot



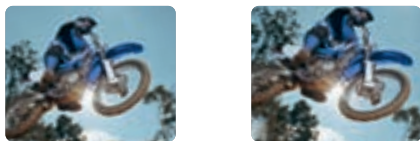
New from old: shoot your old, faded photos with the Revive Shot function. The camera's Trapezium Corrector aligns the image and the Color Restoration corrects the picture's colours. So your old colour photos look as good as new!

9-point Multi AF display



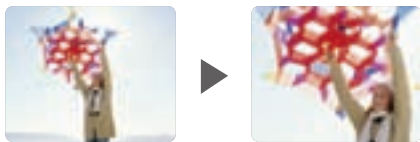
Keep an overview: the focus display now shows all measuring points used for focusing. This makes focusing easier to understand and allows you to take simpler, safer pictures.

High-speed continuous shooting



Fast and focused: the high-speed continuous shooting function lets you capture fast-moving activities with impressive clarity.

Zoom continuous shooting



Before pressing the shutter release, a second image detail can be selected next to the full image. Both images are presented next to one another and saved after the shutter release.

● EX-V7

● EX-Z1050

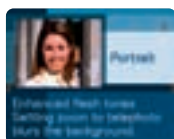
● EX-S770

● EX-Z700

● EX-Z75
EX-Z65

The EXILIM photo functions.

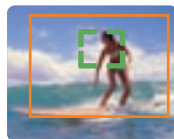
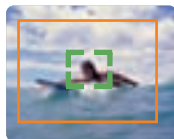
BEST SHOT



Perfect pictures automatically? No problem, using the practical pre-recorded motif programmes supplied with the BEST SHOT function.

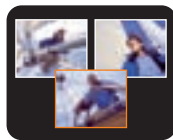
The actual motif programmes depend on the model.

Auto Framing function



With BEST SHOT Auto Framing, the camera automatically focuses on a moving subject and fixes it within a frame. This way the subject is always perfectly centred in the picture and saved when you press the shutter.

Layout Shot function



For creative users: shoot two or three photographs in quick succession inside one image frame, and then automatically save them as a collage.

Non Deterioration Zoom



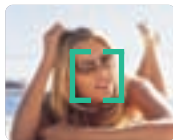
This function extends the 3x optical zoom. The digital camera acquires an extremely high zoom capability, achieving multiple enlargement at the selected VGA resolution.

Cropping



With the 10.1 megapixels of the EX-Z1050, you can also enlarge a selected detail of the image in high-resolution quality and store it as an additional photo in the camera.

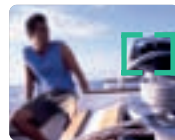
Autofocus area



Spot AF Area



Multi AF Area



Tracking AF Area

Individually programmable: spot autofocus, 9-point multi autofocus, or tracking AF*.

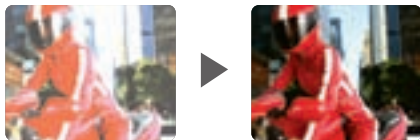
* EX-V7 and EX-Z1050 only.

Date Editing function



Perfect timing: if you change time zones or use the wrong settings, pictures can be saved with an incorrect date. With the Date Editing function, the date and time can be corrected subsequently.

Exposure Warning



Avoid lighting mistakes: when the shutter release is pressed down half-way, an Exposure Warning lights up in the display. So you are always warned of over- or underexposure in time.

Format Assist function



The Format Assist function automatically shows the optimal format that can be achieved with the selected photo resolution. Ideal for large photos or posters.

● EX-V7

● EX-Z1050

● EX-S770

● EX-Z700

● EX-Z75
EX-Z65

The EXILIM movie functions.

Optical zoom while shooting movies*



Zoom in on moving scenes while recording a movie.

High-quality H.264 movie



Top-quality movies: create high-quality movies in H.264 format. Also in high-resolution (848 x 480) Wide Screen format (16:9) and with stereo sound.

High-quality MPEG-4 movie



Top-quality movies: with MPEG-4 movies can be recorded in VGA resolution with sound. Immediately afterwards, you can admire them on a big TV screen.

Movie Light

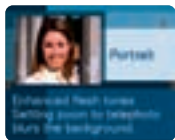


without Movie Light

with Movie Light

Thanks to LED, movies can even be recorded in poor lighting conditions.

Movie BEST SHOT



The perfect setting: with the Movie BEST SHOT function, anyone can shoot good movies - automatically. You can choose from a range of pre-installed movie programmes.

The actual motif programmes depend on the model.

Motion Print



Moving pictures: with the Motion Print function, you can select and print a single picture from a movie scene. Additionally, the camera displays eight images (four before and four after the selected image) which can then be printed.

Movie stabilizer function



without Movie stabilizer function

with Movie stabilizer function

Electronic stabilizer function

It's almost impossible to shoot movies with perfectly still hands. The Movie stabilizer function ensures that the danger of blurred movies caused by moving hands is considerably reduced.

Snapshot-in-Film function



Shoot movies and take pictures at the same time? No problem, with the Snapshot-in-Film function. Just press the shutter while you're filming and you can take photographs (filming is interrupted during photo recording).

Short Movie



Short and sweet: using the Short Movie function, you can record different highlight scenes as a short film and later watch them as exciting individual movies.

Past Movie



Got it: from now on, you'll never miss an exciting moment again. Just select the Past Movie programme and follow the action on the TFT colour display. When an exciting moment comes, simply press the shutter button and the camera automatically saves the last five seconds prior to the shutter release.

Editing function



More exciting movies: the Editing function allows you to easily put together the best sequences of a movie using the camera itself - before transferring the movie to your PC.

Perfect match:
original accessories
from EXILIM.



EXZ-CASE1
Fine leather
protective case



EXC-CASE1
Fine leather
protective case



● EX-V7

● EX-Z1050
EX-Z1000

● EX-S770

● EX-Z850
EX-Z750
EX-Z700
EX-Z600

● EX-Z75
EX-Z70
EX-Z65
EX-Z60
EX-Z7, EX-Z6

● EX-S600
EX-S500



EXZ-SPORT1
Nylon case



EXZ-SPORT2
Nylon case



EXZ-WALLET3
Fine leather protective case



EXC-WALLET1
Fine leather protective case



EXC-WALLET2
Fine leather protective case



EXZ-WALLET4
Fine leather protective case



ESC-80GRKCA
Fine leather protective case



ESC-80FWKCB
Fine leather protective case



EXZ-WALLET5
Fine leather protective case



CASIO.

Compatible:
EXILIM accessories.



EWC-90
Underwater casing
(only EX-Z1050)



● EX-V7

● EX-Z1050
EX-Z1000

● EX-S770

● EX-Z850
EX-Z750
EX-Z700
EX-Z600

● EX-Z75
EX-Z70
EX-Z65
EX-Z60
EX-Z7, EX-Z6

● EX-S600
EX-S500



EX-CLEAN
Cleaning set



EXM-TRIPOD
Camera tripod with suction cup base



ENS-2BN red,
ENS-2BK grey (not illustrated)
Neck and hand carrying strap



NP-20
Lithium-ion battery



NP-40
Lithium-ion battery (1.230 mAh)



NP-50*
Lithium-ion battery



BC-11L
Mobile battery charger



BC-30L
Mobile battery charger



*Mobile battery chargers
BC-40L not illustrated

Technical data

Camera:	EXILIM Hi-Zoom EX-V7	EXILIM Zoom EX-Z1050
Effective pixels:	7.2 million	10.1 million
Imaging element:	1/2.5-inch CCD chip (7.41 million pixels total)	1/1.75-inch CCD chip (10.3 million pixels total)
Image file format:	still image: JPEG (Exif 2.2), DCF 1.0 standard, DPOF-compliant; movie: H.264/AVC, MOV (motion JPEG AVI when the image quality setting is "LP"); audio: WAV (stereo)	still image: JPEG (Exif 2.2), DCF 1.0 standard, DPOF-compliant; movie: AVI (motion JPEG); audio: WAV (mono)
Recording media:	11.6 MB built-in flash memory, card slot for SD/SDHC/MMC memory cards	15.4 MB built-in flash memory, card slot for SD/SDHC/MMC/MMCplus memory cards
Lens/Focal distance:	F3.4 (W) to 5.3 (T), f = 6.3 (W) to 44.1 (T) mm (equivalent to approx. 38 to 266 mm on a 35 mm film camera), 12 lenses in 9 groups, incl. aspherical lens	F2.8 (W) to 5.1 (T), f = 7.9 (W) to 23.7 (T) mm (equivalent to approx. 38 to 114 mm on a 35 mm film camera), 7 lenses in 5 groups, incl. aspherical lens
Zoom:	7x optical zoom, 4x digital zoom (28 times both with optical and digital zoom)	3x optical zoom, 4x digital zoom (12 times both with optical and digital zoom)
Focusing:	contrast-type AF (spot AF, multi AF, tracking AF), manual focus (MF), macro, infinity mode, AF Assist Light	contrast-type AF (spot AF, multi AF, tracking AF), manual focus (MF), Pan Focus for movie only (PF), macro, infinity mode, AF Assist Light
Shutter speed:	normal: 1/2 to 1/800 second, Aperture Priority AE: 1 to 1/800 second, Shutter Speed Priority AE and manual exposure: 60 to 1/800 second (shutter speeds can be different when using a BEST SHOT scene)	normal: 1/2 to 1/1,000 second, BEST SHOT Night Scene: 4 to 1/1,000 second (shutter speeds can be different when using a BEST SHOT scene or ISO settings)
Aperture:	F3.4/4.6/9.2, automatic (depends on selected focus range, F9.2 is the aperture when the ND filter is being used)	F2.8/8.0, automatic (depends on selected focus range, F8.0 is the aperture when an ND filter is being used)
Sensitivity:	ISO 64/100/200/400/800 (automatic/manual), max. ISO 1,600 when BEST SHOT scene is "High Sensitivity"; movie: automatic	ISO 80/100/200/400/800 (automatic/manual), max. ISO 1,600 when BEST SHOT scene is "High Sensitivity"; movie: automatic
Flash:	automatic, manual on/off, red-eye reduction, soft flash, rapid flash	automatic, manual on/off, red-eye reduction, soft flash, rapid flash
Recording functions:	snapshot, BEST SHOT, snapshot with sound (max. approx. 30 sec./snapshot), continuous shooting (normal speed, high speed, rapid flash), macro, self-timer, movie with stereo sound (Normal Movie, Short Movie, Past Movie, Movie BEST SHOT), voice recording	snapshot, BEST SHOT, snapshot and movie with sound, continuous shooting, macro, self-timer, voice recording
Monitor/Viewfinder:	6.4 cm (2.5-inch) TFT colour display (230,400 pixels, 960 x 240)	6.6 cm (2.6-inch) Wide Screen TFT colour display (114,960 pixels, 479 x 240)
Battery life:	normal recording ¹⁺⁵ : up to approx. 240 shots continuous playback ² : up to approx. 6 hrs. voice recording ³ : up to approx. 4 hrs. 20 min. movie recording ⁴ : up to approx. 1 hr. 40 min.	normal recording ¹ : up to approx. 370 shots continuous playback ² : up to approx. 9 hrs. 50 min. voice recording ³ : up to approx. 12 hrs. movie recording ⁴ : up to approx. 2 hrs. 50 min.
Dimensions:	95.5 x 59.8 x 25.5 mm (W x H x D, excluding protrusions, 20.8 mm at thinnest part)	91.1 x 57.2 x 24.2 mm (W x H x D, excluding protrusions, 20.7 mm at thinnest part)
Weight:	approx. 149 g (excluding battery and accessories)	approx. 125 g (excluding battery and memory card)
Standard accessories:	USB docking station (CA-35) with AC adaptor, AC power cord, USB cable, AV cable, strap, rechargeable lithium-ion battery (NP-50), basic reference, CD-ROM	battery charger (BC-31L), AC power cord, USB cable, AV cable, strap, rechargeable lithium-ion battery (NP-40), basic reference, CD-ROM

¹CIPA standard. ²Continuous snapshot playback conditions: temperature 23 °C, scroll one image about every 10 seconds. ³Voice recording time based upon continuous redording. ⁴Approximate time for continuous movie recording without zoom. ⁵Automatic settings, standard brightness of the TFT color display. ⁶Data Transport: Windows® XP, Windows® 2000, and Mac OS X (from 10.2.8) compatible; Photo transport: Windows® XP, Windows® 2000, Windows® ME, and Windows® 98 compatible.

EXILIM Card EX-S770	EXILIM Zoom EX-Z700	EXILIM Zoom EX-Z75/Z65
7.2 million	7.2 million	7.2/6.0 million
1/2.5-inch CCD chip (7.41 million pixels total)	1/2.5-inch CCD chip (7.41 million pixels total)	EX-Z75: 1/2.5-inch CCD chip (7.41 million pixels total); EX-Z65: 1/2.5-inch CCD chip (6.37 million pixels total)
still image: JPEG (Exif 2.2), DCF 1.0 standard, DPOF-compliant; movie: AVI (MPEG-4); audio: WAV (mono)	still image: JPEG (Exif 2.2), DCF 1.0 standard, DPOF-compliant; movie: AVI (motion JPEG); audio: WAV (mono)	still image: JPEG (Exif 2.2), DCF 1.0 standard, DPOF-compliant; movie: AVI (motion JPEG); audio: WAV (mono)
6.0 MB built-in flash memory, card slot for SD/SDHC/MMC memory cards	8.3 MB built-in flash memory, card slot for SD/SDHC/MMC memory cards	8.0 MB built-in flash memory, card slot for SD/SDHC/MMC/MMCplus memory cards
F2.7 (W) to 5.2 (T), f = 6.2 (W) to 18.6 (T) mm (equivalent to approx. 38 to 114 mm on a 35 mm film camera), 6 lenses in 5 groups, incl. aspherical lens	F2.7 (W) to 5.2 (T), f = 6.2 (W) to 18.6 (T) mm (equivalent to approx. 38 to 114 mm on a 35 mm film camera), 6 lenses in 5 groups, incl. aspherical lens	F3.1 (W) to 5.9 (T), f = 6.3 (W) to 18.9 (T) mm (equivalent to approx. 38 to 114 mm on a 35 mm film camera), 6 lenses in 5 groups, incl. aspherical lens
3x optical zoom, 4x digital zoom (12 times both with optical and digital zoom)	3x optical zoom, 4x digital zoom (12 times both with optical and digital zoom)	3x optical zoom, 4x digital zoom (12 times both with optical and digital zoom)
contrast-type AF (spot AF, multi AF), manual focus (MF), Pan Focus (PF), macro, infinity mode, AF Assist Light	contrast-type AF (spot AF, multi AF), manual focus (MF), Pan Focus (PF), macro, Auto Macro function, infinity mode, AF Assist Light	contrast-type AF (spot AF, multi AF), manual focus (MF), Pan Focus (PF), macro, infinity mode
normal: 1/2 to 1/2,000 second, BEST SHOT Night Scene: 4 to 1/2,000 second (shutter speeds can be different when using a BEST SHOT scene)	normal: 1/2 to 1/2,000 second (shutter speeds can be different when using a BEST SHOT scene)	normal: 1/2 to 1/2,000 second (shutter speeds can be different when using a BEST SHOT scene)
F2.7/F4.3, automatic (depends on selected focus range)	F2.7/F4.3, automatic (depends on selected focus range)	F3.1/F4.4, automatic (depends on selected focus range)
ISO 50/100/200/400 (automatic/manual), max. ISO 800 when BEST SHOT scene is "Anti Shake" or "High Sensitivity"; movie: automatic	ISO 50/100/200/400 (automatic/manual), max. ISO 800 when BEST SHOT scene is "Anti Shake" or "High Sensitivity"; movie: automatic	ISO 50/100/200/400 (automatic/manual), max. ISO 800 when BEST SHOT scene is "Anti Shake" or "High Sensitivity"; movie: automatic
automatic, manual on/off, red-eye reduction, soft flash, rapid flash	automatic, manual on/off, red-eye reduction, soft flash, rapid flash	automatic, manual on/off, red-eye reduction, soft flash
snapshot, BEST SHOT, snapshot with sound (max. approx. 30 sec./snapshot), continuous shooting (normal speed, high speed, rapid flash), macro, self-timer, movie with sound, movie BEST SHOT, voice recording	snapshot, BEST SHOT, snapshot and movie with sound, continuous shooting, macro, self-timer, voice recording	snapshot, BEST SHOT, snapshot with sound (max. approx. 30 sec./snapshot), continuous shooting, macro, self-timer, movie with sound, voice recording
7.1 cm (2.8-inch) Wide Screen TFT colour display (230,400 pixels, 960 x 240)	6.9 cm (2.7-inch) TFT colour display (153,600 pixels, 640 x 240)	6.6 cm (2.6-inch) Wide Screen TFT colour display (114,960 pixels, 479 x 240)
normal recording ¹⁺⁵ : up to approx. 200 shots; continuous playback ² : up to approx. 4 hrs. 50 min.; voice recording ³ : up to approx. 6 hrs. 40 min.; movie recording ⁴ : up to approx. 1 hr. 30 min.	normal recording ¹ : up to approx. 460 shots; continuous playback ² : up to approx. 7 hrs. 50 min.; voice recording ³ : up to approx. 9 hrs. 30 min.; movie recording ⁴ : up to approx. 3 hrs. 10 min.	normal recording ¹ : up to approx. 230 shots; continuous playback ² : up to approx. 4 hrs. 20 min.; voice recording ³ : up to approx. 4 hrs. 20 min.; movie recording ⁴ : up to approx. 1 hr. 45 min.
94.5 x 60.4 x 17.3 mm (W x H x D, excluding protrusions, 13.7 mm at thinnest part)	88.5 x 57.0 x 20.5 mm (W x H x D, excluding protrusions, 18.6 mm at thinnest part)	95.4 x 60.6 x 19.6 mm (W x H x D, excluding protrusions, 16.2 mm at thinnest part)
approx. 127 g (excluding battery and memory card)	approx. 112 g (excluding battery and memory card)	approx. 122 g (excluding battery and memory card)
USB docking station (CA-34) with AC adaptor, USB cable, AV cable, strap, rechargeable lithium-ion battery (NP-20), basic reference, CD-ROM, provided software ⁶	USB docking station (CA-29) with AC adaptor, USB cable, AV cable, strap, rechargeable lithium-ion battery (NP-40), basic reference, CD-ROM	battery charger (BC-11L), AC power cord, USB cable, AV cable, strap, rechargeable lithium-ion battery (NP-20), basic reference, CD-ROM

EXILIM is a registered trademark of CASIO COMPUTER CO. LTD. Any other company or product names are registered trademarks or trademarks of those companies. Deviations in design, colours, errors and technical changes reserved. Product availability on request. For more information see: www.exilim.com

For more information visit: www.exilim.com

Supplier:

CASIO Europe GmbH, Bornbarch 10,
D-22848 Norderstedt, Germany

Dealer's address